



Ústecký kraj



EUROPEAN UNION
EUROPEAN REGIONAL
DEVELOPMENT FUND

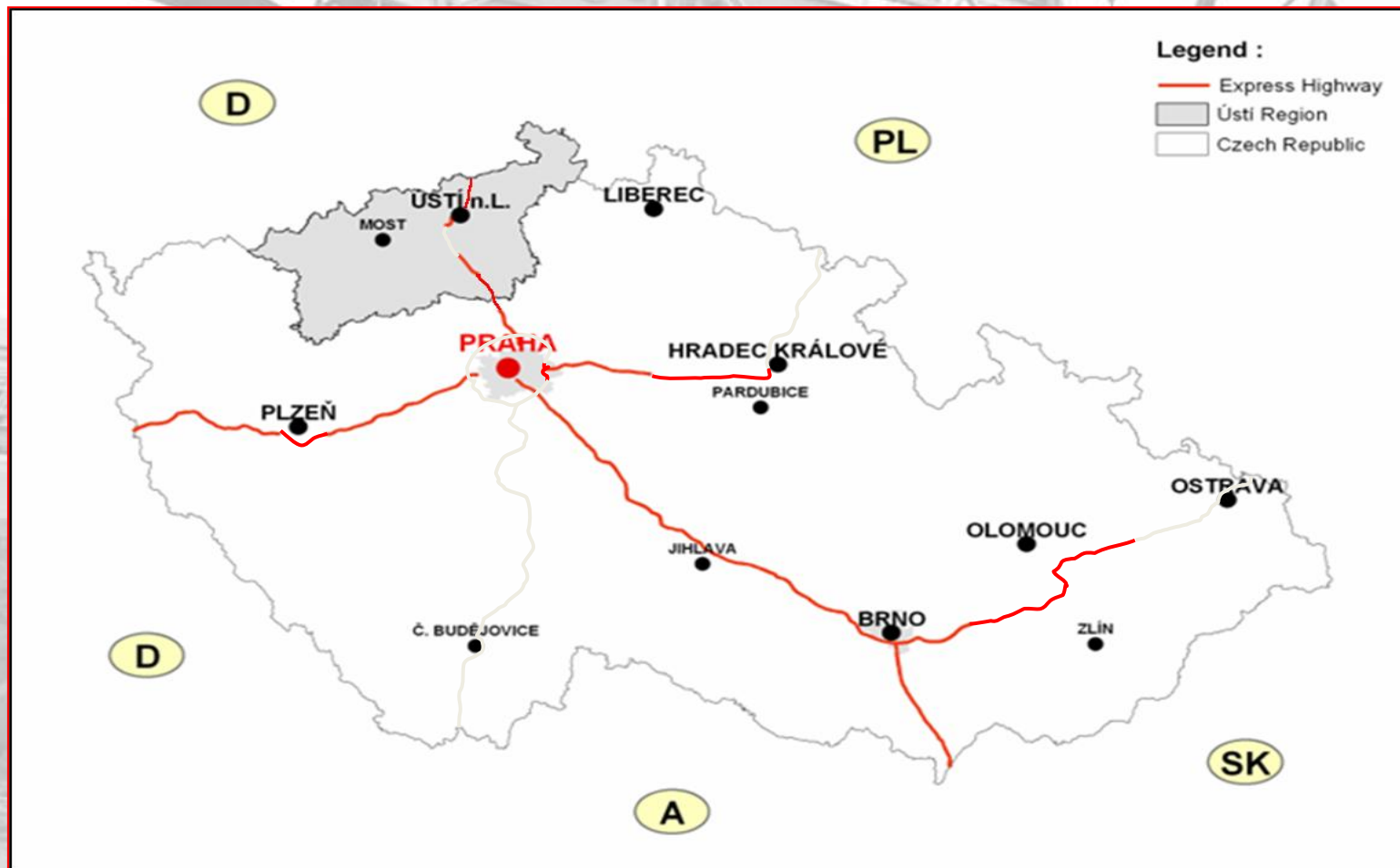
ADAPT2DC PP5 Ústí Region

Kick off meeting

Erfurt, DE

19/1/2012

Ústí Region, Czech Republic



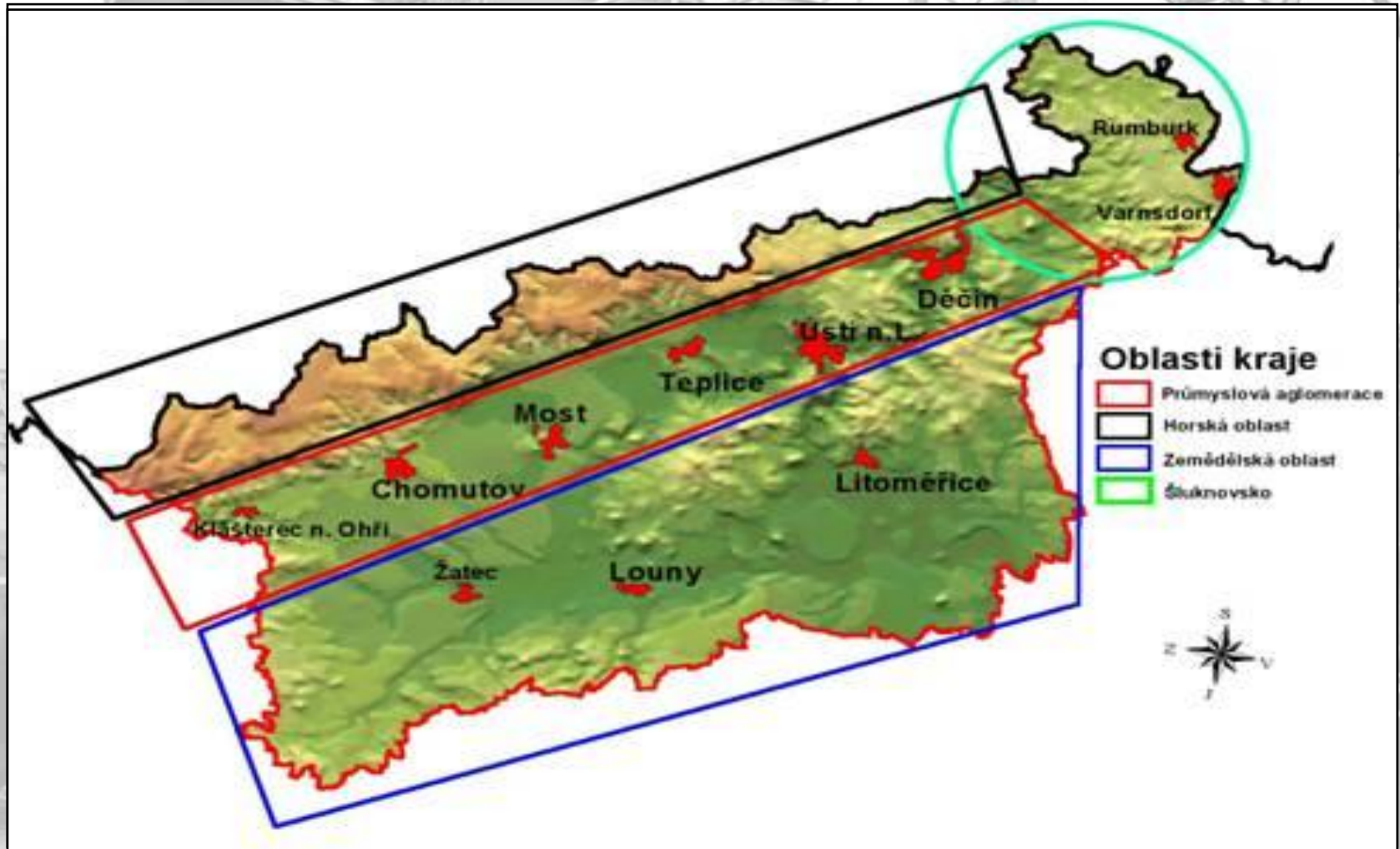
- Border region – Saxony, hardly affected by demographic changes after 2nd World War
- Mining region
- Energy producer



Brief characteristic of the Ústí Region

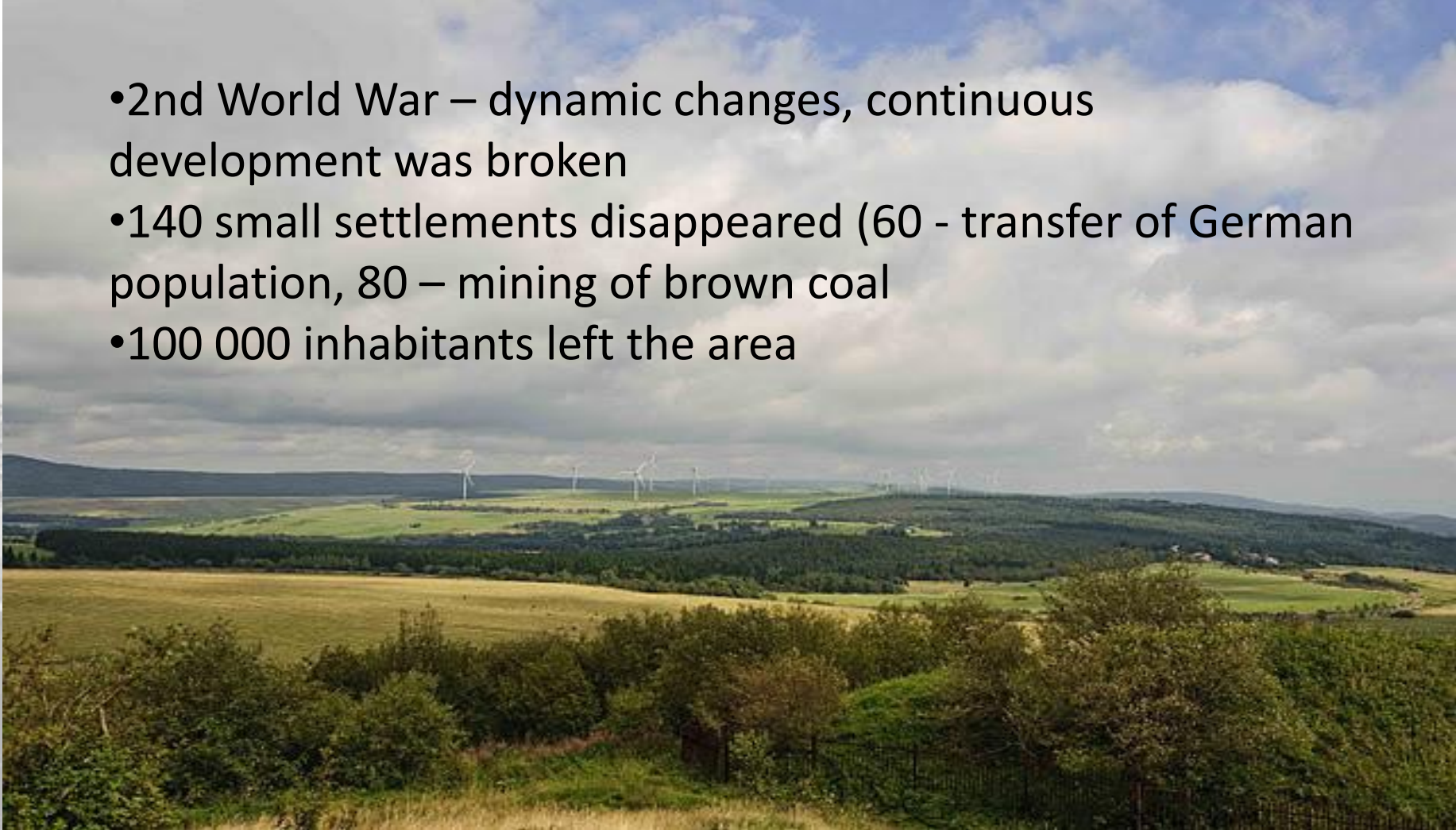
- **Total Area of the Region: 5 335 km²**
- **NUTS III**
- **Total Number of Inhabitants: 823 100**
- **Number of Working Age Inhabitants: 358 000**
- **Rate of unemployment: 12%**

Brief characteristic of the Ústí Region



Population development

- 2nd World War – dynamic changes, continuous development was broken
- 140 small settlements disappeared (60 - transfer of German population, 80 – mining of brown coal)
- 100 000 inhabitants left the area



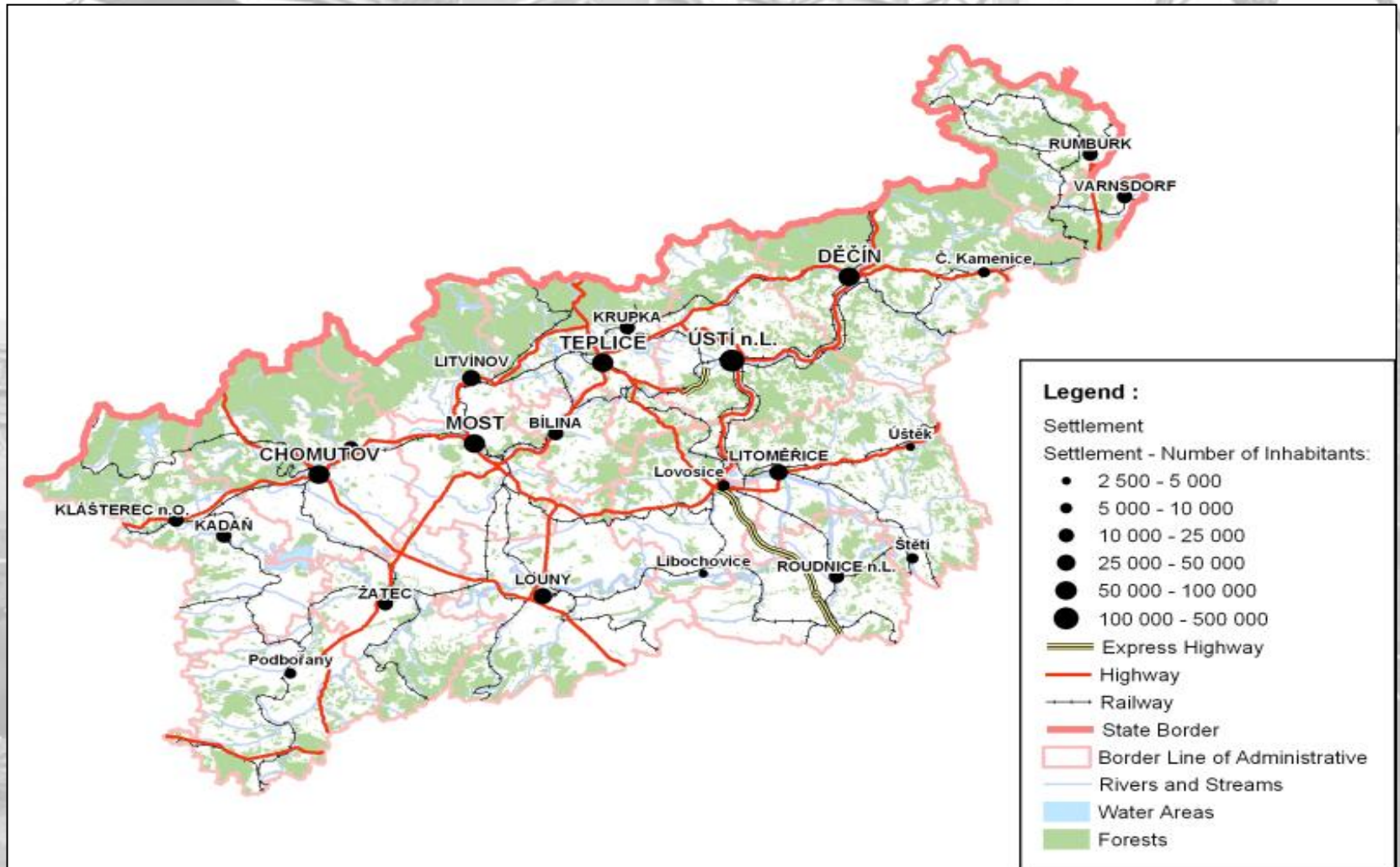
Brief characteristic of the Ústí Region

Population development

- Huge development of big centres – towns
- Current status – concentration of population in the industrial area – settlement axis
 - Chomutov – Most – Teplice

Information on the Pilot area

Location



This project is implemented through the
CENTRAL EUROPE Programme co-financed
by the ERDF

Peripheral mountainous area, borders with Saxony, outside important development axes and centres
Bad availability, rough conditions, insufficient maintenance of the existing roads
High density of population since middle ages



Town of Vejprty – centre of the area – Municipalities- Kovářská, Měděnec, Kryštofovy Hamry (Černý Potok + Mezilesí)

Total number of inhabitants 5 400

Density of population 130/km²



The background image is a grayscale photograph of an industrial construction or mining site. A large crane with a lattice boom is the central focus, its structure extending from the top left towards the center. In the lower right, a dark-colored truck is partially visible, with the number '609' and some text on its side. The ground appears to be dirt or gravel. The overall scene suggests a heavy industrial environment.

Information on the Pilot area

Historical background

- Ore mining – tin, copper, silver, iron ore – explored, mines closed
- Logging – deforestation
- 20th century – migration of population,
- Construction of water reservoir Přísečnice,
- Interruption of the historical relations and links with Saxony

Information on the Pilot area Přísečnice water reservoir



This project is implemented through the
CENTRAL EUROPE Programme co-financed
by the ERDF

Definition of problems

- Small settlements and municipalities
- Old neglected and derelict premises, new constructions only for recreation
- Influence of the declining infrastructure on the population structure - old residents
- Small municipalities – low budgets
- Bad availability, rough conditions
- Missing infrastructure - shops, health care schools
- Only basic services exist

Definition of problems

- 28% uninhabited houses
- Centers of towns – derelict, devastated premises and monuments
- 50% of inhabitants economic activity
- 30% commuting - job
- Smaller settlements – tourism

- Peripheral location, bad availability is leading to moving of inhabitants to the big centres
- Low education level, small number of private business
- Problems with Roma population
- Weak economical base



Pilot action - Solutions

- Energy savings
- Plans on restructuring of the infrastructure and services in the area
- Strategies and measures to reduce the migration of inhabitants from the area

Pilot action - Solutions

- Identification of the existing infrastructure
- Energy savings in public buildings
- Improvement of cooperation among respective municipalities (clean up the snow, de-icing)
- Maintenance of the roads in winter-improvement of the availability
- Support of revitalisation of the historical relations with Saxony





Ústecký kraj



EUROPEAN UNION
EUROPEAN REGIONAL
DEVELOPMENT FUND

Ivana Polakova

PP5 Ústí Region

Czech Republic

This project is implemented through the
CENTRAL EUROPE Programme co-financed
by the ERDF